

WARNING: IDENTILOCK™ is **not** a theft prevention device. When used properly, IDENTILOCK is a deterrent to prevent the unauthorized access of a firearm. IDENTILOCK is **not** a replacement for a firearm safe. **Always** keep your firearm out of sight and reach of unauthorized users. IDENTILOCK is **not** a universal locking mechanism. **Always** use the correct model of IDENTILOCK for your firearm. IDENTILOCK should always be used while also practicing the three basic rules of firearm safety.

**ALWAYS SAFE.
ALWAYS READY.**



getIDENTILOCK.com



IDENTILOCK™ QUICKSTART GUIDE

Get safe and secured access to your firearm.

↓ To watch a video tutorial and download a copy of our Quickstart Guide, visit www.getIDENTILOCK.com/guide

🔋 To receive battery recharge reminders for your IDENTILOCK, sign up at www.getIDENTILOCK.com/recharge

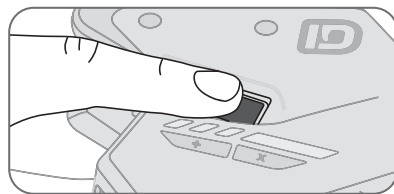
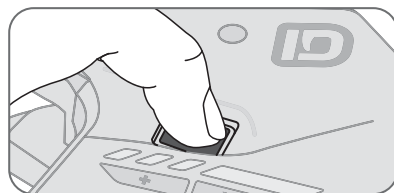
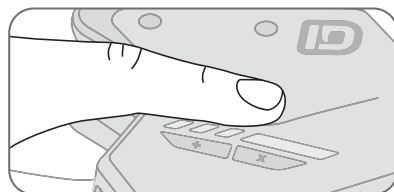
Troubleshooting

My fingerprint is not being recognized.

- Ensure that the pad of your fingertip is **laying flat** on the fingerprint scanner.
- Your finger should be **fully covering** the scanner.
- You must **press down** onto the scanner for it to scan your fingerprint.
- Ensure that the fingerprint scanner is **clean**. (Clean with a dry cloth only.)

If you continue having issues with getting the IDENTILOCK to recognize your fingerprint, please follow the steps and tips on the backside of this guide to Delete and re-Enroll your fingerprint profile.

For additional guidance and support, please visit: getIDENTILOCK.com/guide



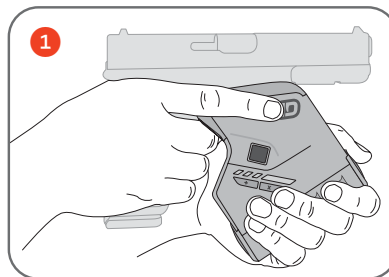
Using IDENTILOCK™

Prior to using, charge your IDENTILOCK until the status indicator light turns green.

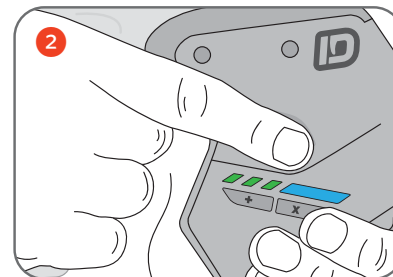
1.) **Use both hands.** Place a hand around the gun grip, and a hand loosely underneath the lock.

2.) **Press finger firmly onto the scanner.**
If your fingerprint is already enrolled, IDENTILOCK will open and release the trigger guard of the unloaded gun.

Warning: IDENTILOCK will release rapidly. Support the device with your other hand to prevent it from free-falling.



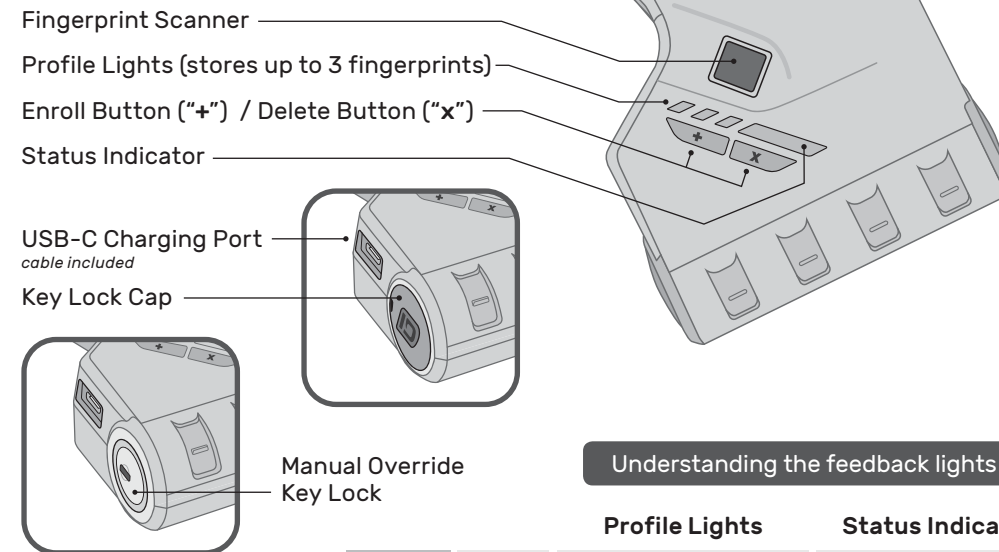
Use both hands when using IDENTILOCK.



Ensure finger is flat and fully over the scanner before pressing down.

Read the Quickstart Guide supplied with your IDENTILOCK before using. (The guide is also available online at getidentilock.com/guide). Always keep your firearm pointed in a safe direction, including when you are installing or removing IDENTILOCK. Always verify that your firearm is unloaded before installing IDENTILOCK. Attempts to use this product on a loaded gun may result in accidental discharge. Store firearms, ammunition and keys separately and securely, away from children and careless adults. Prevent exposure to moisture and direct sunlight. While locking devices are an important aid to security measures, they are not a substitute for safe firearm handling and proper storage. Remember that any security device can be bypassed with enough time, knowledge, determination and equipment.

Get to know your IDENTILOCK™ trigger lock:



Understanding the feedback lights:

		Profile Lights	Status Indicator
Steady	Red	Delete selected profile	Deletion Mode
	Blue	Enroll selected profile	Enrollment Mode
	Green	Profile slot unselected	Print Match
Blinking	Red	Low Battery*	Print not matched
	Green	Print scan successful	Enrollment successful

* Sign up for battery recharge reminders at: getidentilock.com/recharge

Enroll a Fingerprint

IDENTILOCK™ can store up to three (3) fingerprints.

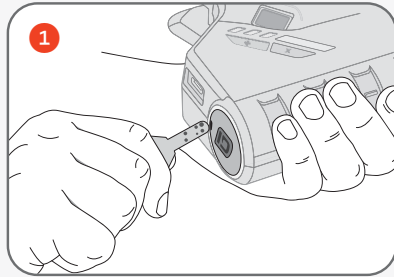
IMPORTANT: Only use an unloaded and safe firearm for this procedure.

- 1.) From the base of the device, pry off the key lock cap using your IDENTILOCK key.
- 2.) Insert your key into the lock and turn clockwise.

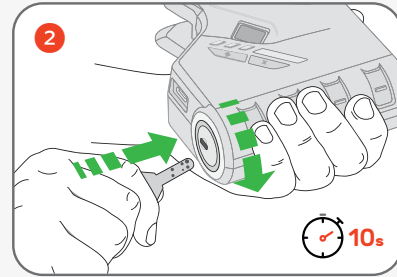
Warning: Enroll Mode will now be activated for only ten seconds.

- 3.) Close the open IDENTILOCK around the trigger guard of the unloaded gun.
- 4.) Push the Enroll (“+”) button to create a fingerprint profile.
The Status Indicator will light up blue.
- 5.) Press finger firmly onto the scanner for one second.
The Profile Lights will blink green for a successful scan, and red for an unsuccessful scan.
- 6.) Repeat Step 5 for a total of eight successful scans.
The Status Indicator will flash green when you have successfully enrolled your fingerprint profile.

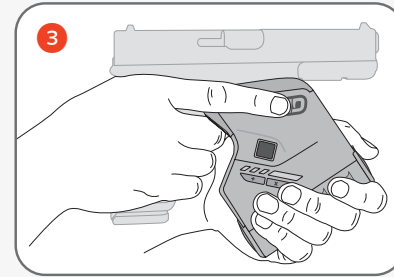
- 7.) Sign up for battery recharge reminders at getIDENTILOCK.com/recharge



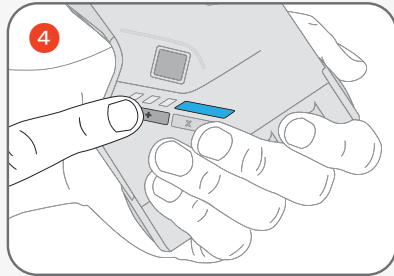
Pry off the key lock cap.



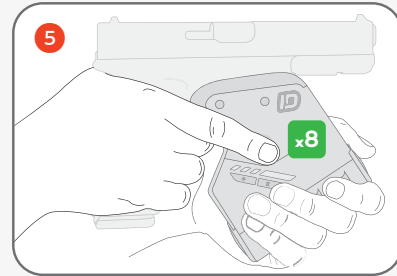
Insert key into lock and turn clockwise.



Close the open IDENTILOCK around the trigger guard of the unloaded gun.



Push the Enroll (“+”) button to create a fingerprint profile.

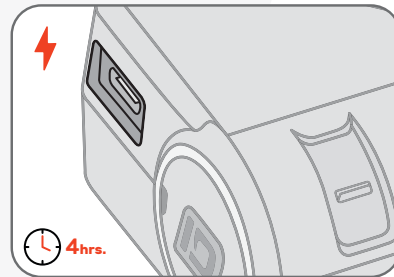


To capture a fingerprint profile, press your finger onto the scanner 8 times.

Tip: Scan your fingerprint at various angles, starting with the center of the pad of your finger and then using the sides of the same finger.



Sign up for battery recharge reminders by visiting: getIDENTILOCK.com/recharge



Prior to using IDENTILOCK, charge the unit until the status indicator light turns green (up to 4 hours).

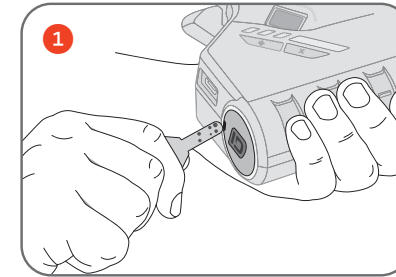
You may charge the built-in battery using the included (or any other) USB-C charging cable. The charging port is located next to the key lock cap.

We recommend recharging your IDENTILOCK every 3 months, or when the profile lights begin blinking red.

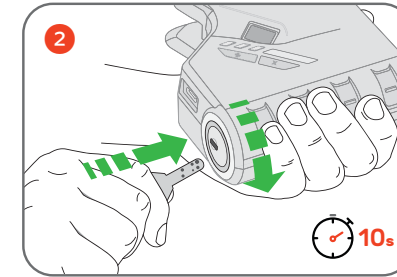
Delete a Fingerprint

A fingerprint profile may be deleted at any time by the IDENTILOCK™ owner/key holder.

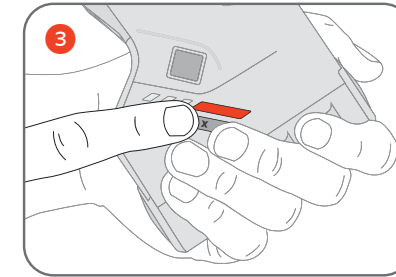
- 1.) From the base of the device, pry off the key lock cap using your IDENTILOCK key.
- 2.) Insert key into the lock and turn clockwise.
- 3.) Push the Delete (“x”) button.
The Status Indicator will light up red to indicate Deletion Mode.



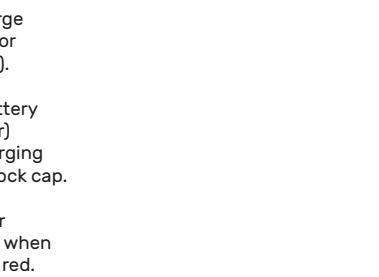
Pry off the key lock cap.



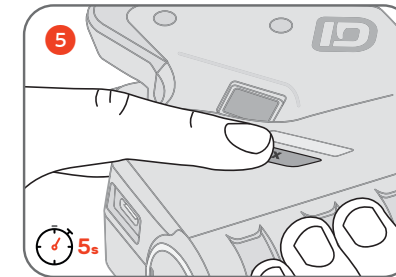
Insert key into lock and turn clockwise.



Push the Delete (“x”) button once to enter Deletion Mode.



Push the Delete (“x”) button until the correct profile is selected.



Hold the Delete (“x”) button for 5 seconds to delete the selected profile.

- 4.) Push the Delete (“x”) button to select a profile.
The selected profile will light up red, while the remaining profile lights will stay green.
- 5.) Hold the Delete (“x”) button for five seconds to delete the selected profile.